

# **British Engineering Services Limited Certification**

## **Assessment Process**

### **Certification of Persons (ISO 17024)**

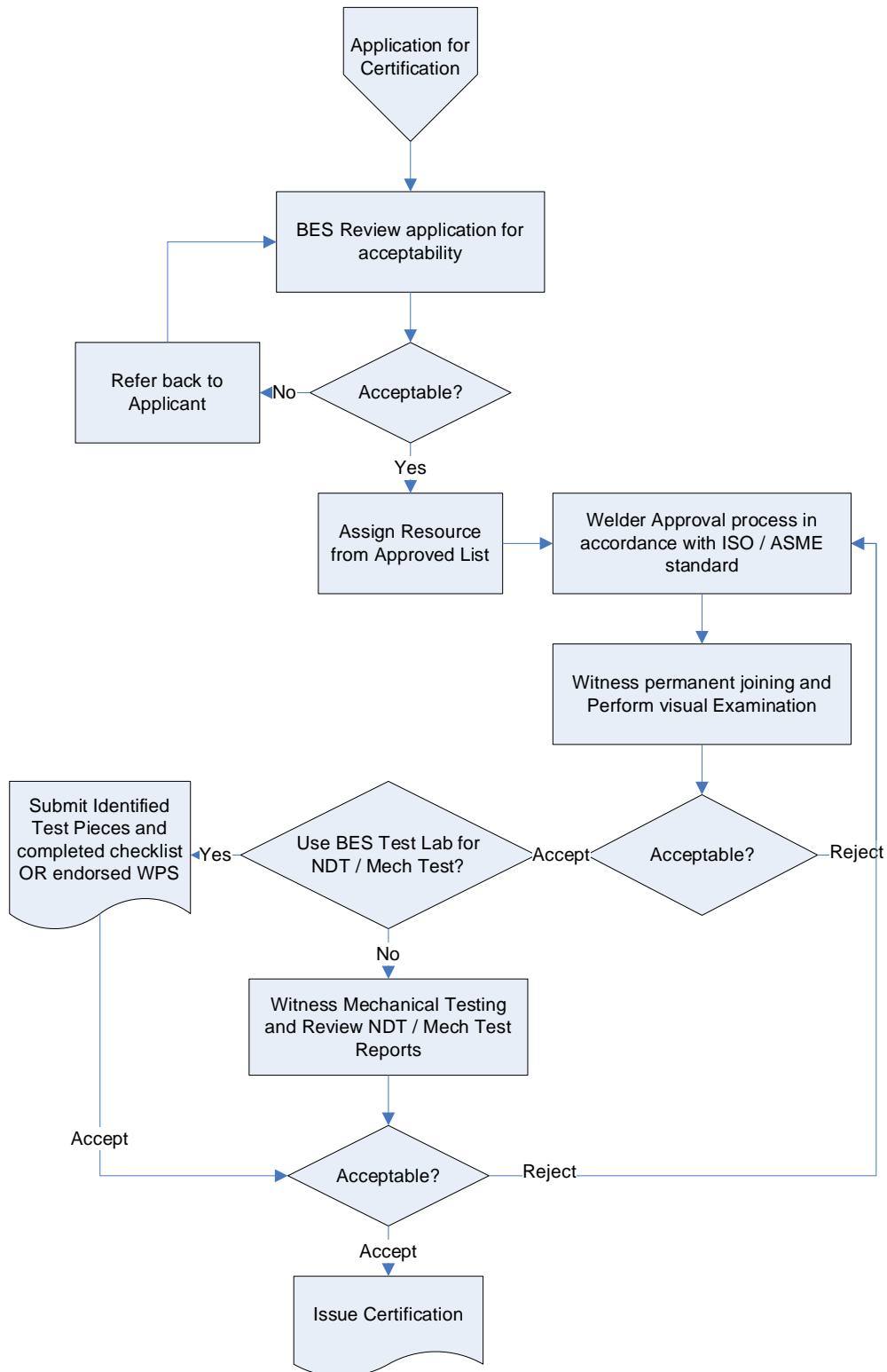
#### **General Overview**

British Engineering Services Limited provides a service for the approval of permanent joining (welding, brazing, soldering, roller expansion) to ISO and ASME standards personnel of permanent joints for pressure equipment in categories III and IV of the Pressure Equipment Directive (PED) / Pressure Equipment Regulations (PESR).

Details on existing certification can be provided upon request.

### Permanent Joining Personnel Certification

A summary of the welder personnel certification process is shown below:



### **Suspension or Withdrawal of Certificates**

As a result of conditions such as:

- Failure to meet the requirements of the certification scheme or
- The candidate does not permit Surveillance or Reassessment to be conducted at the required frequencies
- Failure to inform the Certification Body of capability to fulfil the requirements of certification

The certification body will notify the candidate and responsible representative of immediate withdrawal of certification. Appeals will be dealt with in accordance with the complaints and appeals process.

Suspension does not apply in the context of this certification scheme.

(In the event of refusal, restriction suspension or withdrawal of a certificate, in line with Article 36 of the Pressure Equipment Directive, the Notifying Authority may be required to be informed).